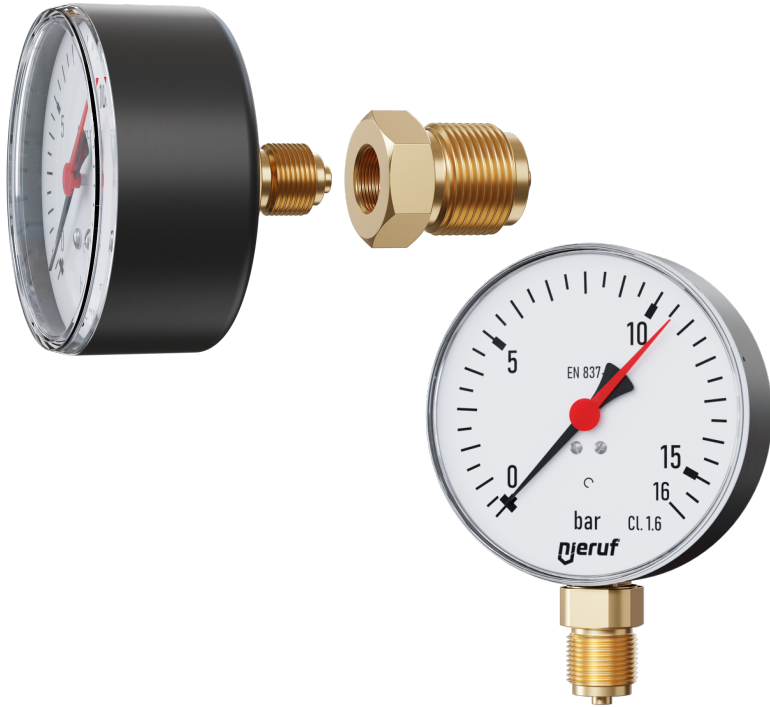


Pressure gauge steel TYP MM04



description:

Pressure gauges are used to visually check the supply pressure in a system. Impress with its high reliability and long-term stability. Ideal for use in the chemical and petrochemical industry, pharmacy and food industry.

product features:

- Suitable for gaseous and liquid, aggressive, not highly viscous and non-crystallizing media that do not attack copper alloys
- radial and axial connection

connection:

MM04: 1/2" B

temperature:

-20°C up to +60°C (environment)
up to +60°C (media)

pressure:

0 up to +60 bar –
depending on design

diameter:

MM04: axial 63 mm and radial 100 mm

design:

body material:

pipe-spring:

connection-nipple:

degree of protection:

measuring element:

pressure gauge steel with pipe-spring measuring element
sheet steel, black
plastic, clipped-in with adjustable red brand pointer
brass
IP 32 according to EN 60529
bourdon tube, copper alloy
up to 60 bar with circular spring
from 60 bar with helical spring
medium: Tmax = +60°C
environment: Tmin = -20°C
Tmax= +60°C

temperature:

caution: display error if the measuring system deviates from the normal temperature by 20°C
with temperature increase approx. ca. ±0,4% /10 K,
with temperature increase approx. ca. ±0,4% /10 K
from the respective scale end value

ring:

accuracy class:

area of use:

63 mm crimp ring,
100 mm bayonet ring
1,6 according to EN 837-1/6
resting load: 3/4 x full scale
alternating load: 2/3 x full scale
maximum load: full scale, only for a short time
plastic white, scaling black
plastic, black

dial:

pointer:

selection criteria / safety aspects for pressure gauges in accordance to EN 837-2:

For liquid media:

media	liquids			
body	without liquid fill			
nominal size	63		100	
display range in bar	≤25	>25	≤25	>25
abbreviation for minimum safety design	0	0	0	0

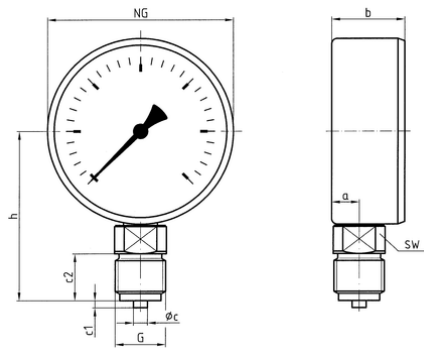
For gaseous media:

media	gas or steam (important: does not apply to oxygen + acetylene)			
body	without liquid fill			
nominal size	63		100	
display range in bar	≤25	>25	≤25	>25
abbreviation for minimum safety design	0	2	1	3
applicable types	MM04	On request	On request	On request

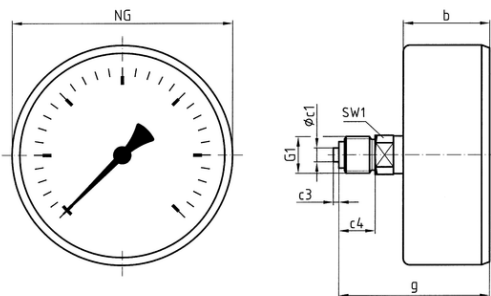
abbreviation:

- 0= pressure gauge without relief opening
- 1= pressure gauge with relief opening
- 2= safety pressure gauges without unbreakable partition wall
- 3= safety pressure gauges with unbreakable partition wall

dimensions:



type	connection	NG	a	b	Øc	c1	c2	G	h	SW
MM04 0 0	radial	100	11	29,5	6	3	20	G 1/2 B	82	14



type	connection	NG	b1	Øc	c1	c2	G	g	s	SW
MM04 1 0	axial	63	29,4	5	2	13	G 1/4 B*	50,4	3,7	14

* The pressure gauge has a 1/4" inch connection. The connection can be enlarged to 1/2" inch by using a transition piece included in the scope of delivery

article number:

type	connection	option	display	diameter
MM04	0 – radial 1 – axial	0 – standard	08 – 0-16 bar 09 – 0-25 bar 10 – 0-40 bar 11 – 0-60 bar	02 – G ½ B

example no. MM040010012

MM04 | **0** | **0** | **10** | **02**

pressure gauge made of steel
connection: radial (bottom)
option: standard
display: 0-40 bar
diameter: G 1/2" B (100mm)

Illustration similar, subject to technical and dimensional change