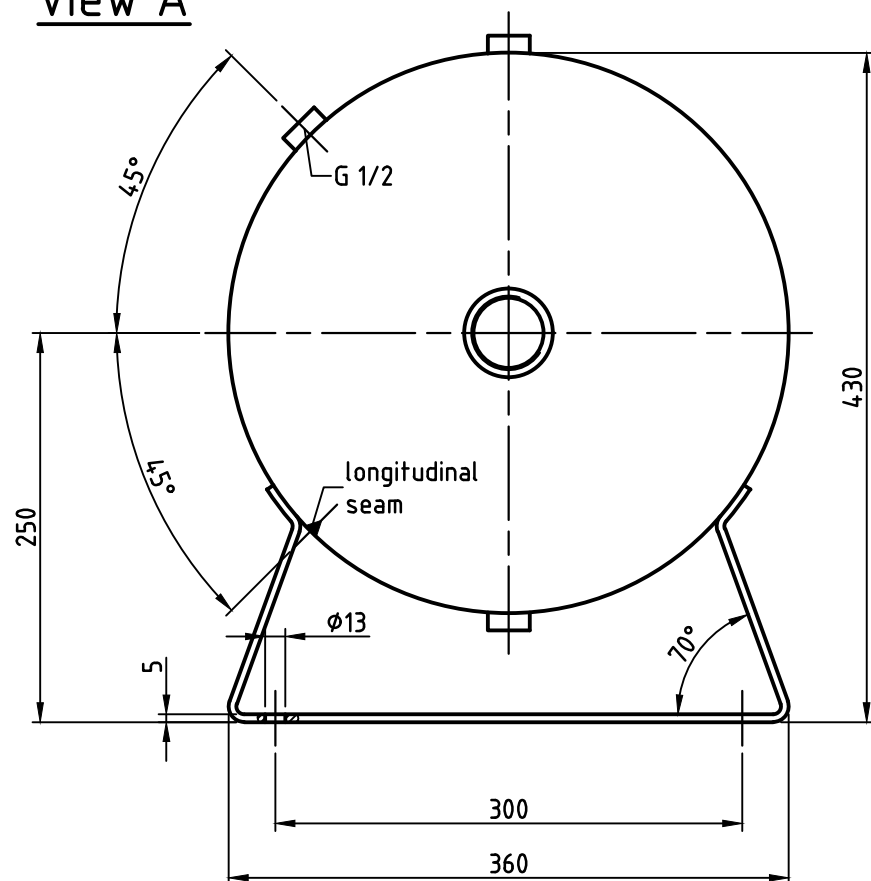
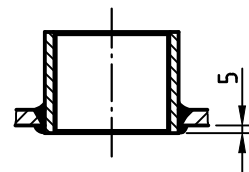


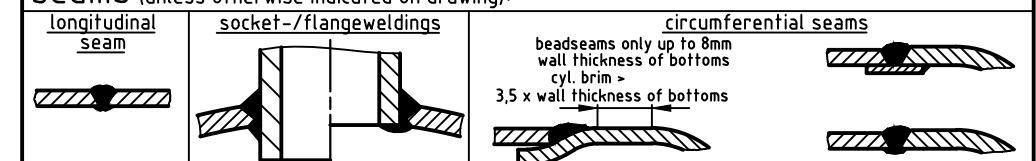
view A



socket welding  
 drain and plug socket  
 inside flush



SEAMS (unless otherwise indicated on drawing):



pressure variation :

pressure swing 0-16 bar max. operations 1.000

infinite operation of pressure swing within 20% of 16 bar

operational characteristics / calculation characteristics :

volume V (litre) : 90  
 max. working pressure PS (bar) : 16  
 test pressure PT (bar) : 15,73  
 min. working temp. TS (°C) : -10  
 max. working temp. TS (°C) : 50  
 fluid : compressed air / nitrogen (fluid group 2)  
 location : inside and outside building possible

coating :

inside : raw or inside : hot dip galvanized  
 outside : primed (if customer wishes lacquered) or outside : hot dip galvanized

manufacturing and testing

acc. to PED 2014 / 68 / EU - AD 2000

conformity benchmark :

fluid group : 2 categorie : III  
 diagram : 2 module : B + C1 / H

scale:	1:5
our no.:	-
order no.:	-
used for:	M+B Standardvessel
weight:	ca.35 kg
sheet:	1
of sheet:	1
date of plot:	24.06.2015
file:	ENG-010820

date		name	
compl.	24.06.2015	CW	
appr.	24.06.2015	SW	
follow protection mark acc. DIN 34			

description:	
pressure vessel horizontal 90 l 16 bar	
drawing no.:	revision: A
MB 030602-2.90/E	
drawing no. of design inspection:	date of revision:
MB 030602-2.90	
revision only on CAD	