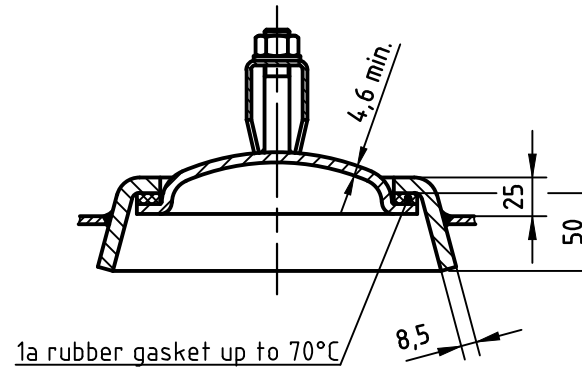
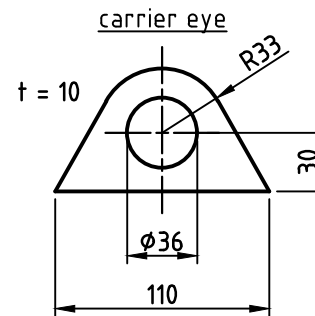
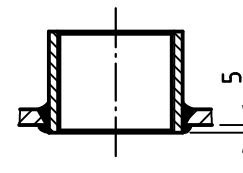


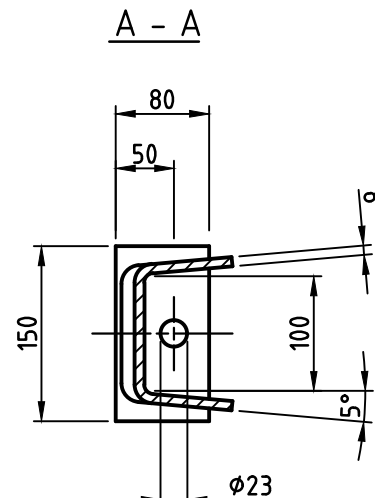
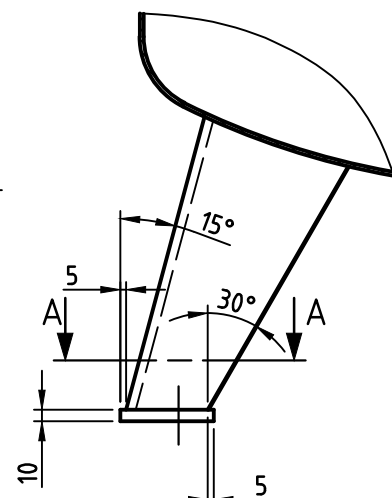
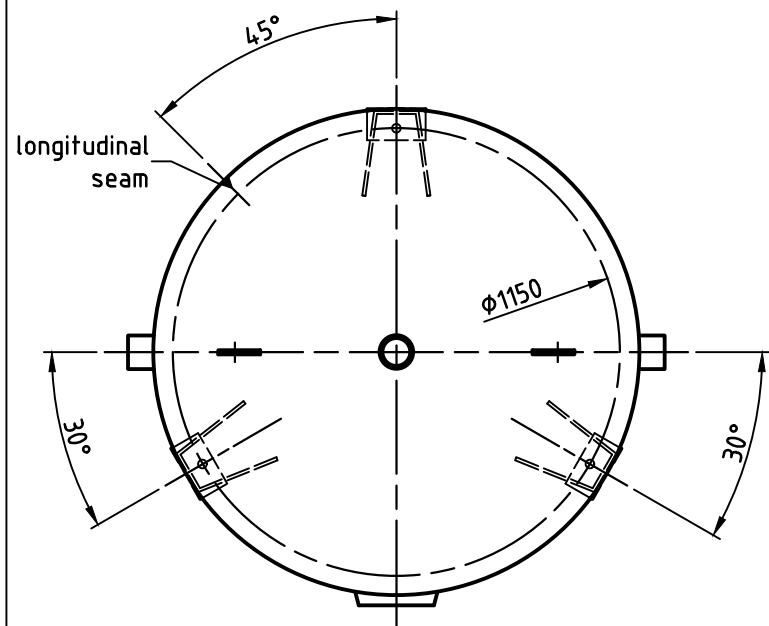
OAB 51 - handhole lock 100/150
tested components



socket welding
drain and plug socket
inside flush



Detail X



SEAMS (unless otherwise indicated on drawing):		
longitudinal seam	socket-/flangeweldings	circumferential seams
		beadseams only up to 8mm wall thickness of bottoms cyl. brim > 3,5 x wall thickness of bottoms
pressure variation :		
pressure swing 0-16 bar max. operations 1.000		
infinite operation of pressure swing within 20% of 16 bar		
operational characteristics / calculation characteristics :		
volume V (litre)	: 3000	
max. working pressure PS (bar)	: 16	
test pressure PT (bar)	: 22,88	
min. working temp. TS (°C)	: -20	
max. working temp. TS (°C)	: 50	
fluid	: compressed air / nitrogen (fluid group 2)	
location	: inside and outside building possible	
coating :		
inside	: hot dip galvanized	
outside	: hot dip galvanized	
manufacturing and testing		
acc. to PED 2014 / 68 / EU - AD 2000		
conformity benchmark :		
fluid group	: 2	categorie : IV
diagram	: 2	module : H1

B	13.12.2019	socket G 2 in bottom removed and socket G 2 1/2 added	MF
		galv. sockets and galv. carrier eyes removed	
no.	date	modification	editor
scale:	1:20		
our no.:	-		
order no.:	-		
used for:	M+B Standardvessel		
weight:	ca. 850	kg	
sheet:	1		
of sheet:	1		
date of plot:	17.06.2015		
file:	ENG-010746		
description:		pressure vessel upright 3000 l 16 bar	
drawing no.:		MB 020103-2.3000V/E	
drawing no. of design inspection:		MB 020103-2	
revision:		B	
date of revision:		13.12.2019	
revision only on CAD			