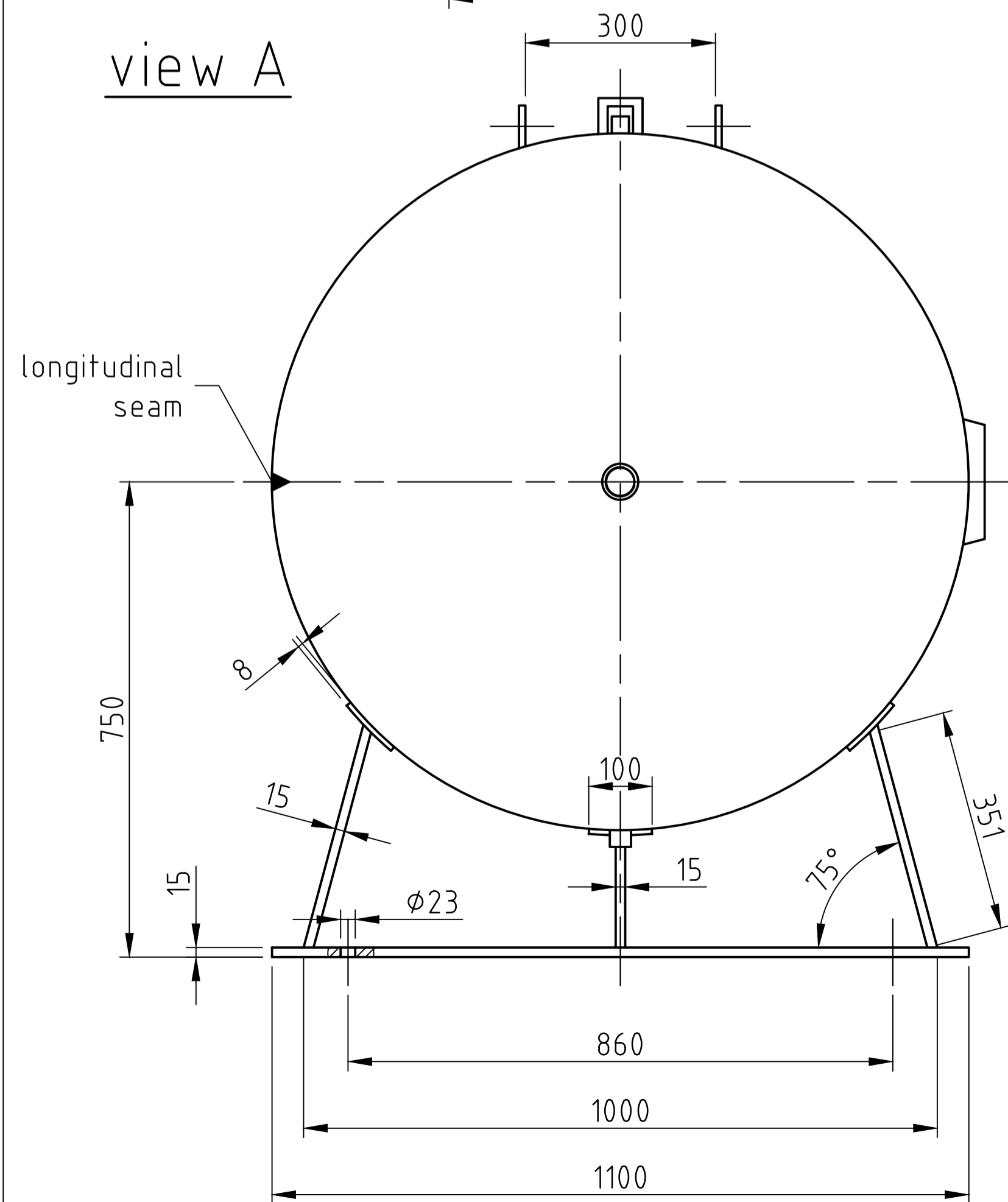
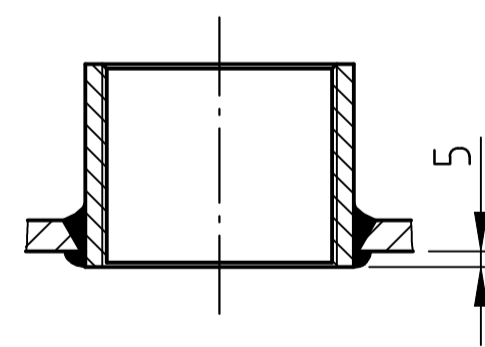


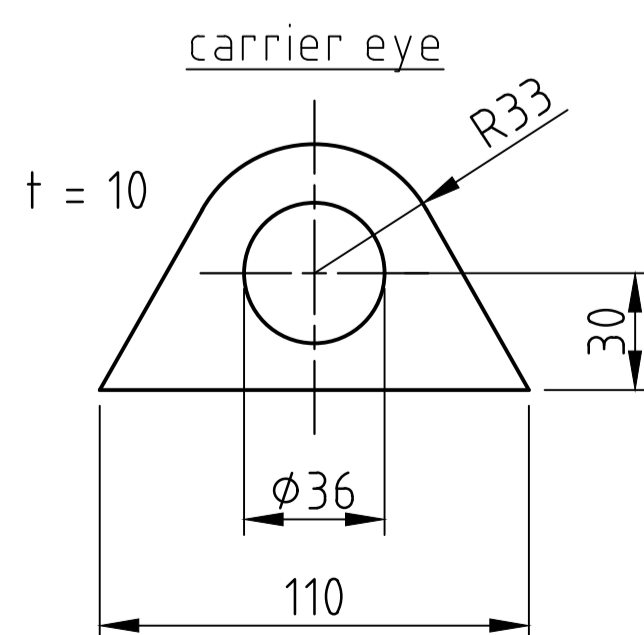
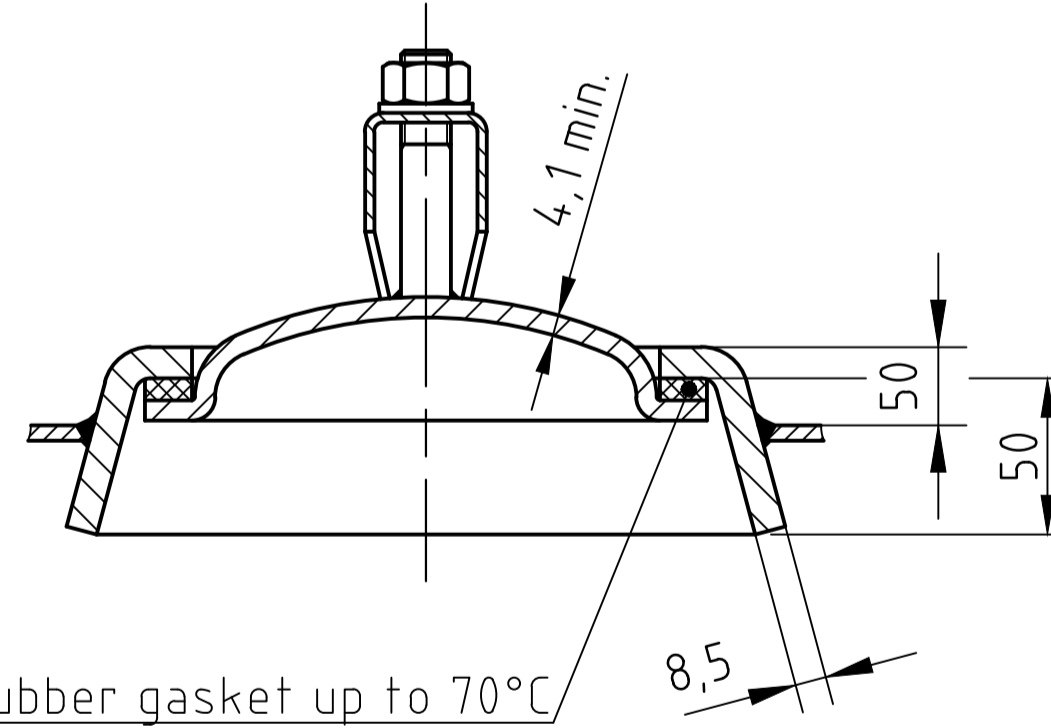
view A



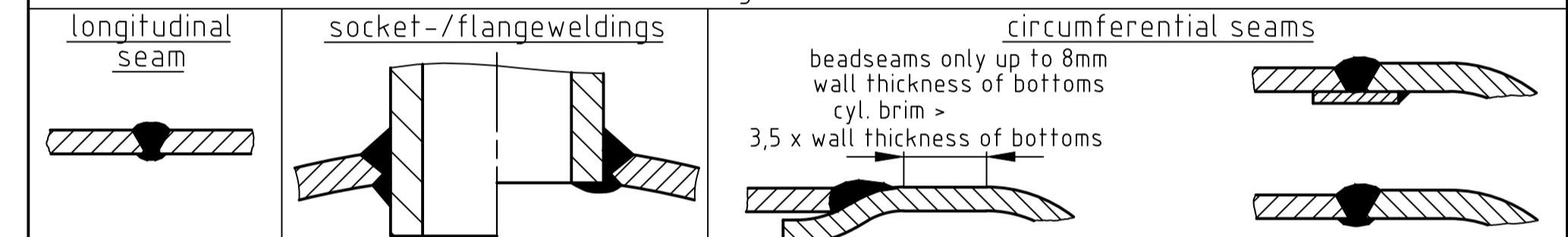
socket welding
drain and plug socket
inside flush



OAB 51 - handhole lock 100/150
tested components



SEAMS (unless otherwise indicated on drawing):



pressure variation :

pressure swing 0-11 bar max. operations 1.000

infinite operation of pressure swing within 20% of 11 bar

operational characteristics / calculation characteristics :

volume V (litre)	: 2000
max. working pressure PS (bar)	: 11
test pressure PT (bar)	: 15,73
min. working temp. TS (°C)	: -20
max. working temp. TS (°C)	: 50
fluid	: compressed air / nitrogen (fluid group 2)
location	: inside and outside building possible

coating :

inside : raw
outside : primed (if customer wishes lacquered)

manufacturing and testing

acc. to PED 2014 / 68 / EU - AD 2000

conformity benchmark :

fluid group : 2
diagram : 2
categorie : IV
module : H1

scale:	1:15
our no.:	-
order no.:	-
used for:	M+B Standardvessel
weight:	ca.480 kg
sheet:	1
of sheet:	1
date of plot:	23.06.2015
file:	ENG-010787

	date	name
compl.	23.06.2015	CW
appr.	23.06.2015	SW
follow protection mark acc. DIN 34		

description:	
pressure vessel horizontal 2000 l 11 bar	
drawing no.:	revision: A
MB 020102-1.2000G/E	
drawing no. of design inspection:	date of revision: 23.06.2015
MB 020102-1	revision only on CAD